

ac
62.09
=1951=

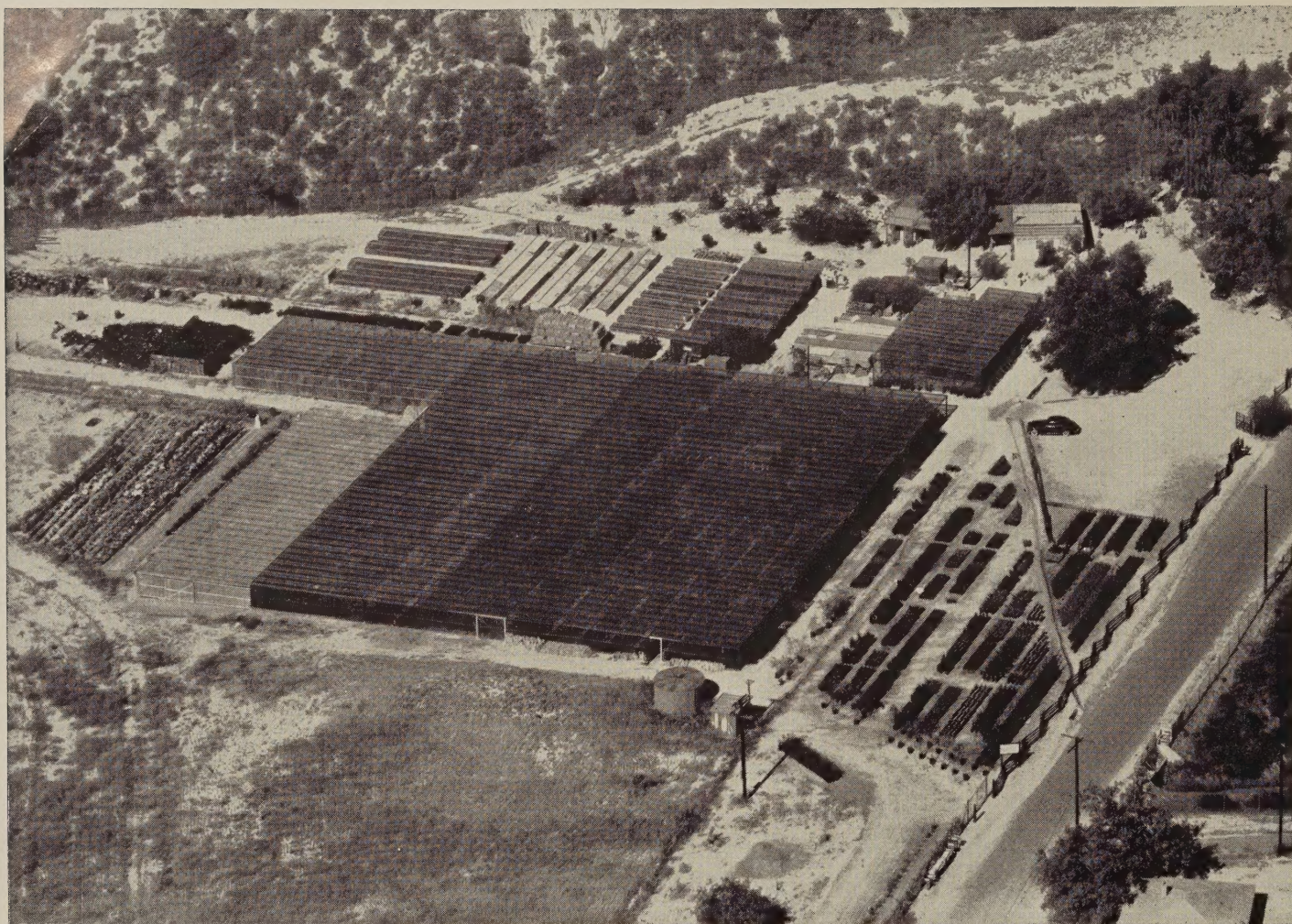


CAMELLIA
VILLE DE NANTES

NUCCIO's NURSERIES

**GROWERS OF RARE CAMELLIAS
AND AZALEAS SINCE 1935**

**3555 CHANEY TRAIL • ALTADENA • CALIFORNIA
TELEPHONE SYCAMORE 4-3383**



AERIAL VIEW OF NUCCIO'S NURSERIES

Terms

Cash with order. California purchasers should add 3% sales tax on total. Prices subject to change without notice. All prices F.O.B. Altadena, California.

Shipping

Please specify method of shipment desired on orders: Parcel Post, Express, Motor Freight, Railroad Freight or Air Freight. When not specified, shipment will be made via Railway Express.

Crating

No crating charge on orders over \$20.00. Otherwise, a \$1.00 charge for one plant and 25c for each additional plant up to order of \$20.00 will be made to cover crating cost.

Guarantee

We guarantee the selection of well grown plants and proper packing for shipment. Shortages, damages or losses upon receipt of order should be made immediately to the transportation agency, and if you will notify us, we shall give you all the assistance we can. At no time will we be responsible for more than the purchase price.

Special Note

All of our Camellias are container grown (1 gal., 3 gal., 5 gal. and 6 gal.) and will be shipped in same. Container grown Camellias can be shipped throughout the year.

We propagate over 650 varieties of Camellias, many of which are not in the following list. Any information desired on varieties not listed will be furnished upon request.

Prices on specimen plants will be quoted upon request.

Notice to residents of the states of Alabama, Florida, Georgia, Louisiana, Mississippi, North Carolina, South Carolina, Tennessee and Virginia:- All shipments of Camellias into these states will be shipped bare rooted, re-balled in peat moss, burlapped and wrapped with waterproof paper. We are experienced in shipping bare rooted Camellias and have found the above method so successful that we are giving the same guarantee we give our container grown Camellias. We have successfully shipped bare rooted Camellias all months of the year, but for best results we advise shipment from mid-September through May.

* after price denotes grafted plants.

SEE NUCCIO'S SPECIAL QUANTITY PRICES ON PAGE 14 BEFORE ORDERING

CAMELLIA JAPONICA

Where To Plant

Even though Camellias can and are being successfully grown in full sun, the best exposure is filtered shade, (trees, lath, etc.) morning, or afternoon sun. If planting a Camellia in full sun, it should be done in the winter months in order to allow the plant to become acclimated before summer heat.

How To Plant

Dig a hole at least twice as deep and twice as big around as the size of the container or ball of the plant. Add 1/3 peat moss or leaf mold to soil taken from hole and mix thoroughly. If soil is heavy (clay or adobe) use at least 50% peat moss or leaf mold. Fill the hole with sufficient amount of mixed soil so that after firming, the top of the plant ball will set at least one inch above the surrounding area. NEVER PLANT TOO DEEP. After setting plant in hole, fill with the mixed soil and pack firmly. Make a basin around the plant and give it a thorough watering to settle soil. Place about one inch of peat moss in basin for mulch.

Watering

Do not allow plants to become dry, and more important, never keep soil soggy wet. Either condition can cause buds to drop or loss of plant. Always bear in mind that a Camellia likes to be kept reasonably moist, but also requires good drainage.

Fertilizing

Camellias should be fertilized during the summer growing months, starting as early as March and not later than August. Three feedings in this period are sufficient, i.e., April, June and August. Space feedings at least 30 days apart. Any of the better known acid fertilizers may be used; preferably cottonseed meal. For amount follow directions on package. NEVER OVER-FERTILIZE.



*Camellia
Flame*

SEEDLINGS DEVELOPED BY OUR NURSERY

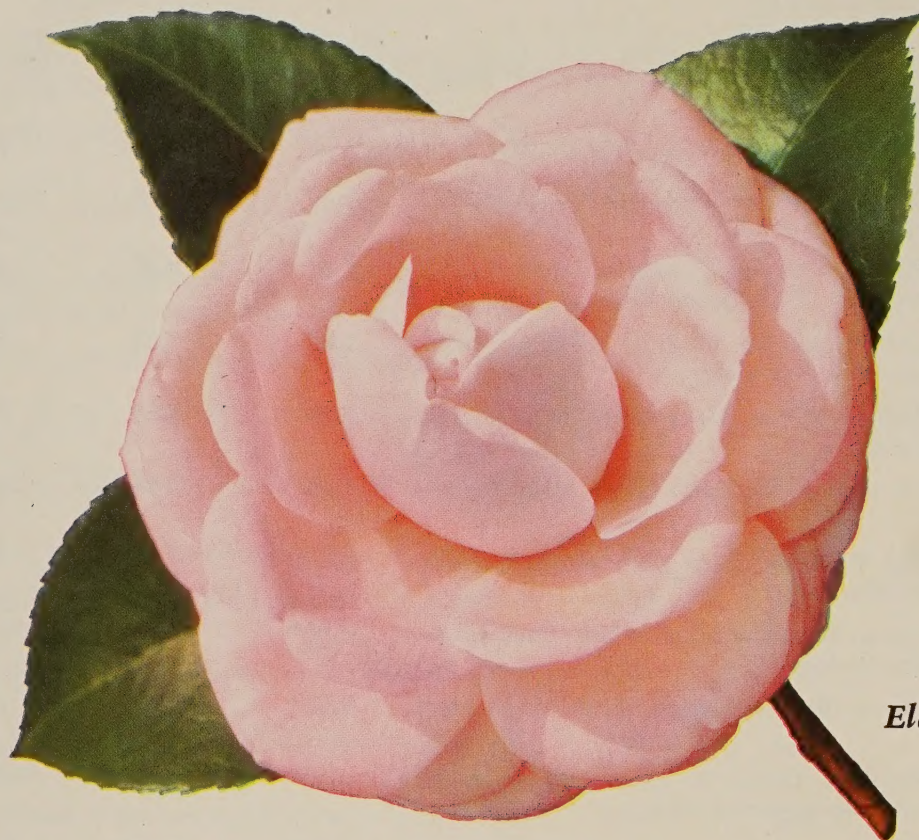
Our seedlings have been carefully selected from hundreds that have bloomed in our nursery. We have endeavored to select only those worthy of propagation after having been thoroughly tested. The following seedlings were released by us in 1949 and have caused a great deal of favorable comment wherever shown.

VARIETY	SIZES			
	12" — 18"	18" — 24"	24" — 30"	30" — 36"
KATHERINE NUCCIO (N No. 104) — This seedling first bloomed in 1942 and has proven itself well worthy of propagation because of its long season of bloom, (starting as early as December and blooming through March) its lasting qualities as a cut flower, and its color. A 3 to 3½ inch double formal, rose form, consisting of 60-65 large petals. Brilliant rose-red, with edges of petals cupped inward. Foliage, dark green, medium, slightly twisted. Compact growth.	\$ 5.00*	\$	\$	\$
PRIMAVERA (N No. 105) — A 3½-4 inch full double formal, with a high center, consisting of 55-60 petals, pure white. Some blossoms show a small petaloid center when fully opened. This seedling first bloomed in 1943, starting its season in February and continuing through April. It is one of the few late blooming varieties that produces good blossoms in the late season. A profuse bloomer with dark green, medium size foliage.	5.00	7.50*	10.00*	15.00*
WARRIOR (N No. 107) — This seedling was selected from hundreds that bloomed in 1943. A 4-4½ inch semi-double to full peony form, brilliant, dark red with golden stamens. Approximately 25 large, round, wavy guard petals with golden stamens and small petals intermixed in center of flower. Foliage, light green, medium size. An upright grower. Blooms early to mid-season.	5.00	7.50		
ADAH PEARL — Pink. Petals heavily veined. Large, semi-double.	2.50	3.50	6.00	7.50
ADOLPHE AUDUSSON — Heavy petalled semi-double, deep red. Very large.	3.00	4.00	7.50*	10.00*

VARIETY	SIZES			
	12" — 18"	18" — 24"	24" — 30"	30" — 36"
ADOLPHE AUDUSSON VAR. — Heavily mottled white form of Adolphe Audusson.	\$ 4.00*	\$	\$ 7.50*	\$10.00*
ALBA PLENA — Still one of the best of the pure white formal doubles showing no stamens.	2.50	3.50	7.50	10.00
ALBA SUPERBA — Large, semi-double, pure white.	1.50	2.50	5.00	
ALEXANDER NOWLIN — Red, spotted white. Medium, formal double.	2.00	3.00		
ANITA — Light pink, striped carmine. Medium to large, semi-double.	2.00	3.00		
ANN MILLER — New. Large, semi-double to double, pale pink.	6.50*			
APPLE BLOSSOM (Salunensis) — Single pink and white. Small.	2.00	3.00	5.00	6.50
ARAJISHI (Aloha) — Salmon-red to deep crimson red. Very early, large peony type.	2.00	3.00	5.00	6.50
ARRABELLA — Orange-red. Resembles Reticulata in form. Large, semi-double.	5.00*			
ASPACIA — Variegated form of Emperor of Russia. Crimson spotted white.	2.00	3.00	5.00	
AUGUSTA EVANS WILSON — Soft pink. Medium-large, full peony form.	2.00	3.00	5.00	6.50
BEAU HARP — Very large, irregular semi-double, brilliant rose-red.	10.00*			
BELLA ROMANA — Light pink, striped dark crimson. Medium-large, double.	1.50	2.50	4.50	5.00
BERENICE BODDY (U. S. Pat. #605) — Light pink with deeper pink under petals, shading to a blush center. Medium-large, semi-double.	3.50*	4.50*	6.50*	8.50*
BESSIE MORSE BELLINGRATH — White with faint blush of pink. Large, semi-double.	5.00*	7.50*	10.00*	
BLACK DRAGON — Very dark red. Large, semi-double to peony form.	4.00*	5.00*		
BIG BEAUTY — White, blotched and spotted pink. Large, semi-double to loose peony form.	4.00*	5.00*	7.50*	
BLEICHROEDER — Soft pink, striped crimson. Medium, rose form, double, occasionally showing stamens.	2.00	3.00	5.00	
BLOOD OF CHINA — Deep salmon-red. Large, semi-double to loose peony form. Late bloomer.	2.00	3.00	5.00	6.50
BLUSH HIBISCUS — White with blush-pink center. Very large single to semi-double.	4.00*	5.00*		
BROOKLYNIA — Pink, mottled white. Medium-large, formal double.	1.50	2.50	5.00	6.00
CALIFORNIA — Rose-red, golden stamens, with unusually large petals. Very large, semi-double.	2.50	3.50*		
CAMPBELL ASHLEY — Dark red. Large, semi-double to loose peony form.	4.00*	5.00*		
CAPT. MARTIN'S FAVORITE — Pink, marbled white. Medium size, full-double imbricated.	2.50		6.50*	8.50*
CATHERINE CATHCART — Light pink, marbled white. Medium to large full double imbricated.	2.50	3.50		
CATHERINE McCOWAN — New. Light pink sport of Eleanor McCowan.	6.50*			
CHANDLERI ELEGANS PINK (Francine) — Rose-pink. Very large anemone form.	2.50	3.50	6.00	7.50

VARIETY	SIZES			
	12" — 18"	18" — 24"	24" — 30"	30" — 36"
CHANDLERI ELEGANS VAR. — Rose-pink, mottled white. Very large anemone form.	\$ 2.50	\$ 3.50	\$ 6.00	\$ 7.50
CHO-CHO-SAN — New. Pale pink, golden stamens. Large, semi-double.	5.00*	6.50*		
CHO-NO-HANAGATA — New. Pale pink. Large, semi-dou- ble to peony form.	4.00*	5.00*	7.50*	
CHOYO-NO-NISHIKI — Large, semi-double variegated. Viv- idly striped rose-red on pink background. Early bloomer.	6.00*			
CLEOPATRA — Pink, marbled white. Large, full peony form.	2.50	3.50		
C. M. HOVEY (Col. Firey) — Brilliant, deep red. Large, full double, imbricated.	2.50	3.50	6.00	7.50
C. M. WILSON — New. Pale pink sport of Chandleri Elegans. Outstanding.	6.00*	7.50*	10.00*	
CONFLAGRATION — Fire-red. Large, semi-double.	4.00*	5.00*	7.50*	
COLLETTII (Collettii Maculata) — Brilliant dark red, blotched white. Medium, peony form.	4.00*	5.00*		
COVINA — Rose-red. Medium, semi-double. Excellent land- scape variety.	1.50	2.50	4.50	6.00
CREPE ROSETTE — Pink, veined with red with lighter mar- gined petals. Large, semi-double.	4.00*	5.00*	7.50*	10.00*
CRUSADER — Deep red. Very large semi-peony form to rose form double.	5.00*	6.50*		
DAIKAGURA RED — Bright rose-pink. Early. Very large peony form.	2.00	3.00	5.00	6.50
DAIKAGURA VAR. — Bright rose-pink, splotched white. Early. Very large peony form.	2.00	3.00	5.00	6.50
DAINTY — Blush-white, striped pink with heavily fringed petals. Semi-double. Sport of Tricolor Sieboldi.	4.00*			
DAITERIN — Light rose-pink. Very large single with mass of blush-white petaloids in center.	5.00*			
DAYBREAK — Light pink. Medium, full peony.	2.50	3.50	6.00	
DEBUTANTE — Soft pink. Large, full peony form. Early.	2.50	3.50	6.00	7.50
DONCKELARI (Southern) — Red, sometimes marbled white. Very large, semi-double with golden stamens. Slow, bushy growth.	2.50	3.50		
DONCKELARI — Same as Donckelari (Southern) with the ex- ception that our parent plant blooms heavily marbled white.	5.00*	7.50*	10.00*	
DOROTHY MAC — This Chandleri seedling is identical to its parent, but pure white in color and not as large a blossom.	2.50	3.50		
DR. SHEPHERD (Te Deum) — Dark red. Very large, from semi-double to full peony to formal double.	4.00*	5.00*	7.50*	10.00*
DR. TINSLEY — New. Large, flesh pink, semi-double to peony. Outstanding.	7.50*			
DUCHESS DE CASES — Light pink, mottled white. Medium to large, full peony form.	2.00	3.00	5.00	6.50
DUNCAN BELL — Brilliant red. Very large anemone form.	2.50	3.50	6.00	7.50
EDWIN FOLK — New. Bright red. Very large, loose semi- double.	6.00*			
ELEANOR HAGOOD — Pale pink. Medium, formal, very double.	4.00*	5.00*	6.50*	8.50*

VARIETY	SIZES			
	12" — 18"	18" — 24"	24" — 30"	30" — 36"
ELEANOR HAGOOD VAR. — Pale pink, mottled white. Medium, formal, very double.	\$ 4.00*	\$ 5.00*	\$	\$
ELEANOR McGRADY — Rose-pink. Large, semi-double.	4.00*	5.00*	6.50*	8.50*
ELEANOR McCOWAN — White, striped with red and pink. Large, semi-double to peony form.	2.50	3.50		
ELEANOR OF FAIROAKS — Ruby-red, marbled white. Large, semi-double to peony form. Variegated Vedrine.	2.50	3.50	6.00*	7.50*
ELENA NOBILE — Bright flame-red. Medium, formal double, showing stamens when fully opened.	2.00	3.00	5.00	6.50
ELIZABETH BOARDMAN — White. Very large semi-double with large twisted petals.	2.50	3.50	6.00	7.50
ELLA DRAYTON — Rose-red. Medium, large formal, very double.	1.50	2.50	5.00	6.00
ELIZABETH FLEMMING VAR. — Clear pink, mottled white. Very large, semi-double.	5.00*			
EMMY BALCHEN — New. White to blush white. Very large, semi-double to anemone form.	4.00*	5.00*		
EMPEROR OF RUSSIA — Scarlet. Large, double to peony form.	2.00	3.00	5.00	6.50
EUGENE LIZZE (Lady Jane Gray) — Rose-pink, marbled white. Large, semi-double to peony form.	4.00*	5.00*	7.50*	10.00*
F. G. #2 — Brilliant red heavily blotched with white. Large semi-double. Slow, compact growth. Believed to be the same as Iwane Shibori.	5.00*	7.50*	10.00*	
FIMBRIATA — Resembles Alba Plena with the exception of the petals which are beautifully fringed.	4.00*	5.00*	6.50*	8.50*
FINLANDIA — White. Large, semi-double with fluted petals.	2.00	3.00	5.00	6.50
FINLANDIA VAR. — White, streaked and speckled red form of Finlandia.	2.00	3.00	5.00	6.50
FIREBRAND — Scarlet-red. Large, semi-double.	2.50		6.00*	7.50*
FIREBRAND VAR. — Scarlet-red, heavily spotted with white. Large, semi-double.	4.00*	5.00*		
FIRST FLUSH — Hybrid (Salunensis x Japonica) Small, single, delicate pink. Profuse bloomer. Valuable as landscape material.	7.50*			
FLAME — Flame-red. Very large, semi-double. Large petals.	2.50	3.50	6.00	
FLAME VAR. — Flame-red, mottled white. Variegated form of Flame.	4.00*			
FLAMINGO — Beautiful, large, light pink, single to semi-double.	5.00*			
FLORENCE STRATTON — White, striped with pink. Large, full formal double. Often sports pure pink blossoms.	3.00		7.50*	10.00*
FRED SANDER — Crimson-red. Medium size, semi-double with curled and heavily fimbriated petals.	4.00*	5.00*	7.50*	10.00*
FRIZZLE WHITE — White. Very large, semi-double, with wavy petals intermixed with stamens.	2.50	3.50		
GEN. DWIGHT EISENHOWER — Deep red. Large, full peony to anemone form.	2.50	3.50	6.00	7.50
GEN. GEO. PATTON — Bright pink. Large, formal double showing stamens.	2.50	3.50	6.00	7.50



Camellia
Eleanor Hagood

VARIETY

SIZES

	12" — 18"	18" — 24"	24" — 30"	30" — 36"
GIGANTEA (Emp. Wilhelm) — Brilliant red, marbled white. Very large, semi-double to peony form.	\$ 4.00*	\$ 5.00*	\$ 6.50*	\$ 8.50*
GIGANTEA ALBA — Very large, pure white, single. Prominent golden stamens.	4.00*			
GLEN 40 — Deep orange-red. Large, full formal double. Slow, compact grower.	4.00*	6.50*	8.50*	10.00*
GLEN 40 VAR. — Deep orange-red, mottled white. Variegated form of Glen 40.	4.00*	6.50*		
GLENN ALLEN — Deep rose-red. Large, semi-double.	4.00*	5.00*	6.50*	
GLENN ALLEN VAR. — Deep rose-red, mottled white. Variegated form of Glenn Allen.	4.00*	5.00*	6.50*	
GLOIRE DE NANTES VAR. — Rose-red, blotched with white. Medium-large, semi-double.	1.50	2.50	5.00	6.00
GOSHOGURUMA — Deep red, occasionally spotted with white. Large, semi-double to peony form.	3.00			
GOV. EARL WARREN — Deep, rich pink. Very large, semi-double with some of the center petals having an irregular twist.	3.00	5.00*	7.50*	10.00*

JOSHUA E. YOUTZ (White Daikagura)

This outstanding new camellia was introduced by our nursery last season. Its blossoms, which are pure white, full peony form to formal double, are larger than its parent, the Daikagura. Its foliage, growing habits and early blooms are, like its parent, making this variety a truly outstanding camellia.

12" — 18"	18" — 24"	24" — 30"	30" — 36"
5.00*	7.50*	10.00*	15.00*

VARIETY	SIZES			
	12" — 18"	18" — 24"	24" — 30"	30" — 36"
GOV. MOUTON — Blood-red, blotched with white. Large, semi-double to peony form.	\$ 2.00	\$ 3.00	\$ 5.00	\$
H. A. DOWNING VAR. — Rose-red, marbled white. Variegated form of H. A. Downing.	2.00	3.00	5.00	6.50
HAKU RAKUTEN — White. Large, semi-double to peony form.	4.00*			
HAKU-TSURU (White Crane) — White. Very large, single to semi-double.	4.00*	5.00*	6.50*	
HERME (Jordan's Pride) — Pink with white border, streaked rose-pink. Large, semi-double.	1.50	2.50	5.00	6.00
HIGH HAT — Pale pink sport of Daikagura.	4.00*	5.00*	7.50*	10.00*
HISHI-KARAITO — Small, bell-shaped, semi-double. Delicate pink.	5.00*		7.50*	
IMURA — White. Very large, semi-double.	2.00	3.00	5.00	
IMPERATOR — Red. Large, full peony form.	1.50	2.50	5.00	6.00
JAMES ALLEN — Fire-red. Very large, semi-double.	4.00*	5.00*	6.50*	
JAMES ALLEN VAR. — Fire-red, mottled white. Variegated form of James Allen.	4.00*	5.00*	6.50*	
JENNY JONES — Blush white. Large, semi-double.	4.00*	5.00*	6.50*	8.50*
J. J. PRINGLE SMITH VAR. — Dark red, heavily marbled with white. Very large, semi-double.	4.00*	5.00*	7.50*	
JOSEPH HOLLAND — Pink, blotched white. Full double imbricated.	4.00*	5.00*		
KENNY — Deep rose-pink, blotched white. Large, semi-double to peony form.	4.00*			
KIMBERLEY — Carmine with red stamens. Medium, single. Profuse bloomer. Very showy.	2.50	3.50		
KING LEAR — Cherry-red, marbled white. Variegated form of Finlandia. Vigorous, compact growth.	2.50	5.00*	6.50*	8.50*
KISHU TSUKASA (Capt. John Sutter) — Deep pink, blotched with white. Large, formal double.	2.50	3.50	6.00	
KUMASAKA — Rose-pink. Large, full double. Upright and compact growth. Profuse bloomer.	2.00	3.00	5.00	6.50
KURO TSUBAKI — Black-red with red stamens. Medium, semi-double. Compact, slow growth.	4.00*	5.00*		
LADY CHARLOTTE — Clear light pink with lighter pink veins. Large, semi-double. Very compact growth.	4.00*	5.00*	7.50*	10.00*
LADY CLARE — Rose-pink. Very large, semi-double. Prominent golden stamens.	2.00	3.00	5.00	6.50
LADY LUCILLE — Very large, full double to peony. Creamy white. Outstanding.	6.50*	7.50*		
LADY MARY CROMARTIE — Deep rose-pink. Large petalled, semi-double. Upright, compact growth.	4.00*	5.00*	6.50*	8.50*
LADY SADIE — White. Large, semi-double with fluted petals that intermix with golden stamens.	5.00*	6.50*		
LADY VANSITTART VAR. White to blush pink, striped with pink. Large, semi-double. Profuse bloomer.	2.50	3.50*	6.00*	
LALLAROOK (Laurel Leaf) — Pink, marbled with white. Large, full double imbricated. Excellent cut flower.	2.50	3.50	6.00	7.50
LAWRENCE WALKER — Brilliant red. Very large, loose peony form.	5.00*	6.50*		

VARIETY	SIZES			
	12" — 18"	18" — 24"	24" — 30"	30" — 36"
LENA JACKSON — New. Large, blush pink, formal to semi-double.	\$ 7.50*	\$	\$	\$
LEONA BOLEN — Brilliant red. Medium to large, semi-double.	2.00	3.00		
LETITIA SCHRADER — Dark, bright red. Very large peony form.	5.00*			
LINDSAY NEILL — Dark red, marbled with white. Large semi-double to loose peony form. Very slow, compact growth.	4.00*	5.00*	6.50*	8.50*
LOTUS — White. Very large semi-double, showing prominent stamens.	2.50	3.50	6.00	7.50
LOUISE McCLAY — Deep pink, heavily veined. Large semi-double with wavy petals.	4.00*	5.00*		
LOUISE McCLAY VAR. — Deep pink blotched with white. Variegated form of Louise McClay.	5.00*	6.50*		
MADGE MILLER (Chandleri Alba) — White. Large semi-double to anemone form.	2.50	3.50	6.00	7.50
MAGNOLIA QUEEN — White with an occasional rose-red blotch and a few light pink stripes. Large, irregular semi-double with flat blossoms.	4.00*	5.00*	6.50*	8.50*
MARASCHINO — Bright red. Medium, formal double.	1.50	2.50	5.00	
MARCHIONESS OF EXETER — Light pink. Large, heavy, full peony form.	2.00	3.00	5.00	6.50
MARGARETE HERTRICH — White. Medium-large, formal double, consisting of numerous petals. Good cut flower.	3.00	4.00	7.50	
MARGARET HIGDON — Rose-red, occasionally showing white margined petals. Large, semi-double.	2.50	3.50	6.00	
MARGARET WALKER — A beautiful new variegated Camellia. White, striped pink. Large semi-double to rose form double.	4.00*			
MARGHERITA COLEONI — Very dark red. Medium to large, rose form double. Late bloomer.	2.00	3.00	5.00	6.50
MARJORIE MAGNIFICENT — New. Pale pink, semi-double to peony form. Outstanding.	10.00*			
MARQUIS DE EXETER — Flesh pink, striped and speckled with deep pink. Large, full peony.	2.00	3.00	5.00	6.50
MARQUIS DE MONTCALM VAR. — Rose-pink mottled with white. Large, semi-double, pine cone formation.	5.00*			
MARTHA BRICE — Light pink. Large, semi-double to loose peony form.	4.00*	5.00*	6.50*	
MARY CHARLOTTE — Pale pink. Medium to large anemone form.	5.00*	6.50*	7.50*	10.00*
MATHOTIANA (Julia Drayton) — Crimson red. Very large, full double imbricated showing stamens when fully opened.	2.50	3.50	6.00	7.50
MATHOTIANA ALBA — White with an occasional pink stripe. Large, imbricated formal.	1.50	2.50		
MATHOTIANA ROSEA — Clear pink sport of Mathotiana Alba.	2.00	3.00	5.00	
MEREDITH LAKE — Pale lavender-pink. Medium, semi-double.	2.00	3.00	5.00	
MISS PASADENA — Clear pink. Large anemone form.	2.00	3.00	5.00	
MIYA (Edith Nichols) — New. Pale pink. Medium to large, irregular semi-double.	4.00*	5.00*	7.50*	10.00*

VARIETY	SIZES			
	12" — 18"	18" — 24"	24" — 30"	30" — 36"
MME. CHARLES BLARD — White. Large, full peony form.	\$ 3.00	\$ 4.00	\$ 7.50*	\$
MME. HAHN — Bright pink. Large, semi-double to peony form. Very beautiful.	3.00	4.00	7.50*	10.00*
MME. HOVEY — Pink, fading to a lighter shade of pink at center of blossom. Medium to large, formal double.	2.00	3.00		
MONJISU VAR. — Red marbled with white. Medium, semi-double. Profuse bloomer.	2.00			
MORNING GLOW — New. White. Large, formal double imbricated.	5.00*	6.50*	7.50*	10.00*
MT. SHASTA — White. Large, full peony form. Upright, compact growth.	3.00	4.00	7.50*	10.00*
MRS. BALDWIN WOOD — White with vivid pink stripe on one or more petals. Large, irregular semi-double to rose form.	5.00*			
MRS. CHARLES COBB — Dark, coppery red. Large, semi-double to loose peony form.	2.50	3.50	6.00*	7.50*
MRS. CHAS. SIMONS — Creamy white. Large semi-double to loose peony form.	2.50	3.50	6.00*	7.50*
MRS. FREEMAN WEISS — Pink, occasionally mottled with white. Large, semi-double with wavy petals.	5.00*	6.50*	7.50*	10.00*
MRS. HOWARD ASPER — Light pink. Very large cup shaped, semi-double. Believed to be the same as Hana Fuki.	4.00*	5.00*	7.50*	10.00*
MRS. K. SAWADA (U. S. Pat. # 481) — Beautiful delicate pink, formal double.	3.50			12.50
MRS. MARIE KEATING — Light pink. Medium-large, semi-double to peony form.	2.00	3.00	5.00	6.50
MRS. TINGLEY — Light silvery-pink. Medium to large, formal double imbricated.	5.00*		7.50*	10.00*
MRS. NELLIE EASTMAN — New. Flesh pink, speckled and striped with deep rose. Medium-large, full peony form. Very beautiful.	6.50*	7.50*	10.00*	
MRS. ROE'S FAVORITE — New. Rose-pink. Large, irregular semi-double with twisted petals surrounding stamens.	3.00	4.00		
MRS. WALTER ALLEN — Rose-red. Large, semi-double.	4.00*	5.00*	6.50*	
MY DARLING — Beautiful, small, soft pink, single. Resembles a poppy.	4.00*		7.50	
NAGASKI — Rose-pink marbled with white. Very large, semi-double.	2.00	3.00	5.00	6.50
OKI-NO-NAMI — Vivid orange-red. Large semi-double. Very showy.	2.50	3.50		
ONIJi — Deep pink marbled with white. Very large semi-double. Variegated form of Lady Clare.	4.00*	5.00*		
PAEONIAEFLORA — Creamy-white with a few rose-red stripes and speckles. Very large, loose peony form.	2.00	3.00	5.00	6.50
PAEONIAEFLORA ROSEA — Brilliant rose-pink sport of Paeoniaeflora.	5.00*	6.50*	10.00*	
PAULETTE GODDARD — Red. Very large, semi-double to loose peony form.	5.00*	6.50*	7.50*	
PAUL HOWARD'S WHITE — White. Large, formal double.	2.00	3.00		
PAX — White. Large, flat formal double. A favorite formal white.	2.50	3.50	6.00	7.50



Camellia
C. M. Wilson

VARIETY	SIZES			
	12" — 18"	18" — 24"	24" — 30"	30" — 36"
PEARL HARBOR — Dark red. Large, irregular semi-double.	\$ 4.00*	\$ 5.00*	\$ 6.50*	\$
PEARL MAXWELL — A beautiful new, large formal double. Soft pink. A glorified Pink Perfection.	10.00*			
PINK BALL — Soft pink. Medium-large, full peony form. Heavy bloomer.	2.00	3.00	5.00	6.50
PINK BLEICHROEDER (Anne Galli) — Light, clear pink. Medium, formal double. Sport of Bleichroeder.	2.00	3.00	5.00	6.50
PINK DUCHESS OF SUTHERLAND — Clear pink sport of Duchess of Sutherland.	4.00*	5.00*		
PINK PERFECTION — Shell pink. Medium, formal double.	1.50	2.50	5.00	6.00
PINK STAR — Rose-pink. Large, irregular semi-double.	2.00	3.00	5.00	
PINK STAR VAR. — Rose-pink blotched with white. Variegated form of Pink Star.	4.00*	5.00*	6.50*	
POPE PIUS IX — Rich orange-red. Large, formal double imbricated.	2.50	3.50	6.00	7.50
PRIDE OF DESCANSO — White. Very large, semi-double to loose peony form.	4.00*	5.00*	7.50*	10.00*
PRINCE FREDERICK WILLIAMS — First release. Large, light pink, formal double of outstanding beauty. Australian import.	10.00*			
PROF. C. S. SARGENT — Dark-red. Medium, full peony form.	2.00	3.00	5.00	6.50
PURITY — White. Medium-large, formal double showing stamens when fully opened.	1.50	2.50	5.00	6.00

VARIETY	SIZES			
	12" — 18"	18" — 24"	24" — 30"	30" — 36"
QUEEN BESSIE — Blush pink. Large, semi-double with wavy petals.	\$ 2.00	\$ 3.00	\$ 5.00	\$ 6.50
QUEEN VICTORIA'S BLUSH — Pale pink spotted with rose-pink. Medium-large, formal double.	2.00	3.00		
REGINA DEI GIGANTI — Bright pink. Large, fluted petals, semi-double.	2.00		6.50*	8.50*
RETICULATA — Brilliant pink. Very large, wavy and fluted petals, semi-double.	5.00*	6.50*	7.50*	10.00*
REV. JOHN BENNETT — Salmon-pink. Very large, semi-double.	2.50		6.00	
RISING SUN — Vivid crimson with red stamens tipped with yellow anthers. Medium-large, single.	4.00*			
ROOSEVELT BLUES — Purplish-red. Large, semi-double to peony form.	3.50*		6.50*	
ROOSEVELT BLUES VAR. — Purplish-red blotched with white. Variegated form of Roosevelt Blues.	5.00*			
ROSALINDA — Bright pink. Large, peony form.	2.50	3.50	6.00	7.50
ROSARY — Light rose-pink. Large, loose, irregular semi-double.	4.00*	5.00*		
ROSARY VAR. — Light rose-pink mottled white. Irregular semi-double. Variegated form of Rosary.	4.00*			
ROSEA PLENA — Rose-pink with dark veins. Large, rose form double.	4.00*			
ROSEA SUPERBA — Rose-pink. Very large, rose form double.	2.50	3.50	6.50	
ROSEA SUPERBA VAR. Rose-pink mottled with white. Variegated form of Rosea Superba.	5.00*	6.50*	7.50*	
ROSE DAWN — Deep rose-pink. Medium-large, formal double.	2.50	3.50	6.00*	7.50*
ROSE GLORY — Deep pink. Large, irregular semi-double.	2.00	3.00	5.00	
SARA-SA — Flesh pink, spotted and striped darker pink. Large, semi-double.	2.50	3.50		
SEMI-DOUBLE BLUSH — Blush pink. Medium, semi-double.	1.50	2.50	5.00	
SEN. DUNCAN U. FLETCHER — Rose-red. Large, irregular semi-double to peony form.	2.50	3.50	7.50*	
SHIN AKEBONO — Pale pink. Large, single to semi-double.	5.00*	6.50*		
SHIRO TAMA — White. Medium-large, rose form double.	2.50	3.50	6.00	7.50
SIERRA SPRING — Bright pink heavily mottled white. Large, semi-double. Variegated form of Mme. Hahn.	5.00*			
SMILING BEAUTY — Delicate pink. Medium-large, semi-double.	4.00*	5.00*		
SNOWDRIFT — White. Medium-large, semi-double.	1.50	2.50	5.00	6.00
SOMEGAWA — Blush-white striped and speckled rose-red. Medium, rose form double.	1.50	2.50	5.00	
STRAWBERRY BLONDE (U. S. Pat. 766) — Light salmon-pink speckled with deep pink. Sport of Paeoniaeflora.		6.50*	7.50*	10.00*
SWEET DELIGHT — Rose-pink. Large, semi-double to peony form. Popular because of its distinctive fragrance.	4.00*	5.00*		
SWEETI VERA — Flesh pink mottled with white with deeper pink speckles. Large, peony form.	4.00*	5.00*		

VARIETY	SIZES			
	12" — 18"	18" — 24"	24" — 30"	30" — 36"
SWEET SIXTEEN — New. Pale pink. Large, irregular semi-double.	\$ 5.00*	\$ 6.50*	\$	\$
ST. ANDRE — Brilliant red. Very large, semi-double to anemone form.	4.00*	5.00*		
STANDARD — Blush pink center shading out to dark rose-pink in outer petals. Large, imbricated double.	2.00	3.00		
TALLAHASSEE GIRL — Large, semi-double to loose peony form. Very soft pink.	5.00*			
THELMA DALE — Silvery-pink. Large, semi-double to rose form double. Sport of Mrs. Baldwin Wood.	7.50*			
TIARA VAR. — Orange-red mottled with white. Large, semi-double to formal double.	4.00*			
TINSIE — Bright red outer guard petals with white peony center. Small to medium, peony form.	5.00*	6.50*		
VEDRINE (Ruby Glow) — Ruby-red. Large, semi-double to loose peony form.	2.50	3.50	6.50*	8.50*
VICTORY — Rose-red. Large, semi-double to full peony form.	2.00	3.00	5.00	
VICTORY WHITE — White. Large, semi-double peony form.	3.00	6.50*	7.50*	
VILLE DE NANTES VAR. — Dark red blotched with white. Large, irregular semi-double with edges of petals fimbriated.	5.00*	6.50*	7.50*	10.00*
VIRGIN'S BLUSH — Blush white. Medium, semi-double to peony form.	5.00*	6.50*	8.50*	10.00*
WARD'S DAIKAGURA — Heavily mottled with white strain of Daikagura.	5.00*			
WHITE EMPRESS — White. Very large, irregular semi-double.	5.00*			
WHITE GIANT — White. Very large, semi-double.	4.00*	5.00*	6.50*	
WHITE HIBISCUS — White. Large, single to semi-double.	4.00*	5.00*	6.50*	
WHITE KING — White. Very large, thick petalled, semi-double.	4.00*	5.00*	6.50*	8.50*
WOODVILLE RED — Strawberry-red. Very large, semi-double to peony form.	5.00*	6.50*	7.50*	10.00*
YOHEI HAKU — White to creamy white, often tinted blush pink. Large, loose double peony form. Extremely early bloomer.	3.00	5.00*	6.50*	8.50*
YOHEI SHIRO — Creamy white, often blush pink. Medium-large, semi-double to full double.	4.00*	5.00*	7.50*	10.00*

Nuccio's Special Quantity Prices

12" — 18" VARIETIES

PRICED AT	ANY 4	ANY 8	ANY 12
\$1.50	\$ 5.50	\$10.75	\$15.75
2.00	7.25	14.25	21.00
2.50	9.00	17.75	26.00
3.00	10.75	21.00	31.00
4.00	14.25	28.00	42.50
5.00	17.50	35.00	52.50

Camellia Sasanqua

In the past few years the Sasanqua has at last been gaining the added popularity it rightfully deserves. Its hardiness, early and profusion of bloom, (September to January), small, dark evergreen foliage make it a valuable addition to our landscape. Sasanquas thrive in full sun or a partially shaded area and may be used as hedges, ground covers, vines or specimens. Care and culture of the Sasanqua is identical to that of the Japonica.

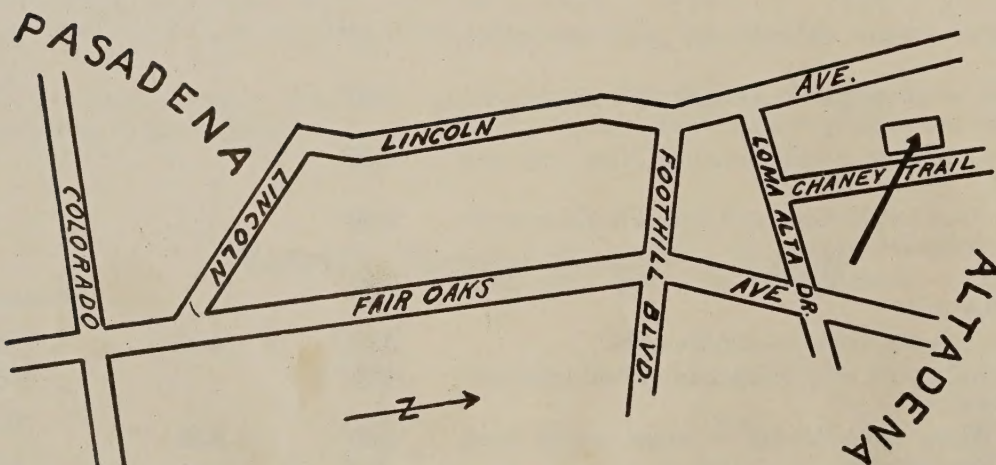
VARIETY

SIZES

	12" — 18"	18" — 24"	24" — 30"	30" — 36"
BRIAR ROSE — Delicate clear pink. Medium size. Upright and spreading.	\$ 2.00	\$ 3.00	\$ 5.00	\$ 6.50
BRILLIANCY — Bright rose-pink. Very compact. Single.	3.00	4.00		
BUTTERFLY — Single white, pink margin. Very vigorous.	3.00	4.00		
CLEOPATRA — Rose-pink. Semi-double to peony type. Very compact growth.	4.00*			
CRIMSON BRIDE — Single, dark crimson red.	3.00	4.00		
DAWN — Beautiful single to semi-double, ivory white with blush pink at the margins of petals. Upright and compact growth.	4.00*			
FLORIBUNDA — Single white, edged lavender-pink. Vigorous, upright and compact.	4.00*			
GULF GLORY — Single white, large blossom. Upright and spreading.	4.00			
HANA JIMAN — Large single white, tipped with pink. Fluted petals. Vigorous, upright and compact.	4.00*			
HINODEGUMA — Large, single white with pink edge. Upright and compact.	4.00*			
HIRYO — Deep crimson-red. Double. Vigorous open growth.	4.00*			
HUGH EVANS — Profuse bloomer. Single pink. Vigorous, upright and compact.	2.00	3.00	5.00	6.50
KOWGYOKU (Little Gem) — Small, full formal double, white with edge of petals slightly marked with pink.	4.00*			
LAVENDER QUEEN — Large, single, lavender-pink.	4.00*			
MAIDEN'S BLUSH — Single, delicate pink.	3.00	4.00		
MININA — Large, single, light pink. Upright, compact growth with very small foliage.	2.00	3.50		
MOMOZONO NISHIKI — Single, pale pink, shading to rose-red border. Vigorous, upright growth.	4.00*			
NARUMIGATA — Single white, shaded pink. Very large. Compact.	4.00*			
NODAMI USHIRO — Large, deep pink, semi-double. Vigorous compact growth.	4.00*			
OLEIFERA — Very large, single white with crinkled petals, edged pink.	4.00*			
PAPAVAR — Large, single, bell shaped. Soft pink. Slender, upright growth.	4.00*			
ROSY MIST — Large, single, delicate soft pink. Spreading grower.	4.00*			
SETSUGEKKA — A large single to semi-double white with ruffled petals that are slightly marked with pink at edges.	4.00*			
SHISHI GASHIRA — Double, bright rose-red. Slow, low and compact.	4.00*			
SHISHIFUKUJIN — Very large, clear, soft pink. Single to semi-double. Upright, compact growth.	4.00*			
SHOWA-NO-SAKAE — Semi-double to peony. Soft pink. Slow, low and compact.	2.50			
VELVETY — Single, velvety, crimson-red. Compact.	3.00	4.00		
VERISCOLOR — Single pink with white center and lavender edge. Upright, compact.	4.00*			
WHITE DOVE — White, semi-double to loose peony form. Vigorous, spreading grower.	2.50	3.50		
WHITE QUEEN — Large, single white with showy stamens.	4.00*			
WILLOW LEAF — Single white, margined with pink. Upright, compact.	4.00*			
YAE ARARE — Beautiful, large, single white with petals tipped pink. Vigorous, bushy, upright growth.	4.00*			



*Camellia
Julia Drayton*



NUCCIO'S NURSERIES

3555 Chaney Trail, Altadena, Calif.

POSTMASTER: If addressee has removed and new address is known, notify sender on Form 3547, postage for which is guaranteed. Forwarding and return postage guaranteed.

Library

U.S. Dept. of Agriculture

Washington 25, D.C.

